



1 Function and area of use

This document explains how to set up a QnUDE Ethernet connection with iX Developer 2.0 with MC Protocol.

Start to read the Start-up document of QnUDE(H) Cpu's (KI00278), it can be downloaded from Beijer Electronics homepage.

Software requirements:

- iX Developer 2.0
- GX IEC Developer 7.04, GX Developer or GX Works2

Hardware requirements:

- QnUDE (ex Q03UDE)
- iX Panel (TxA, TxB, TxC)

2 About this Start-Up document

This Start Up document should not be considered as a complete manual. It is an aid to be able to start up a normal application quickly and easily. For further information we refer to the manual for iX Developer 2.0. This document and other Start Up documents can be obtained from your closest distributor of operator terminals.

Please use the address *manual@beijer.se* for feedback on our Start Up documents.

3 Set up Q-CPU

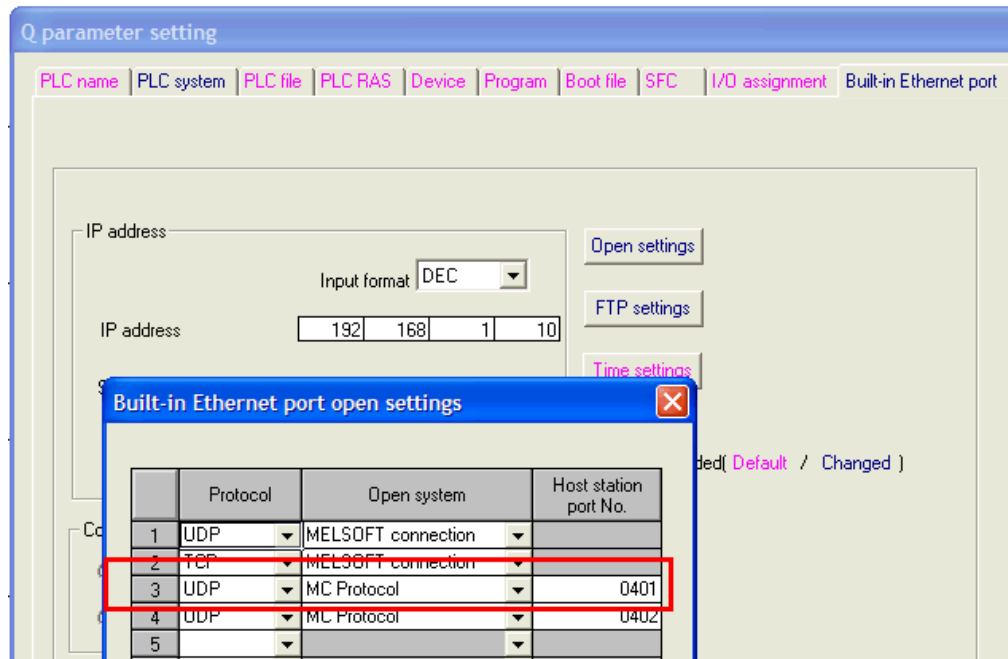
This chapter will explain how to set up the Q-CPU in GX (IEC) Developer and GX Works2.

3.1 Settings in GX (IEC) Developer

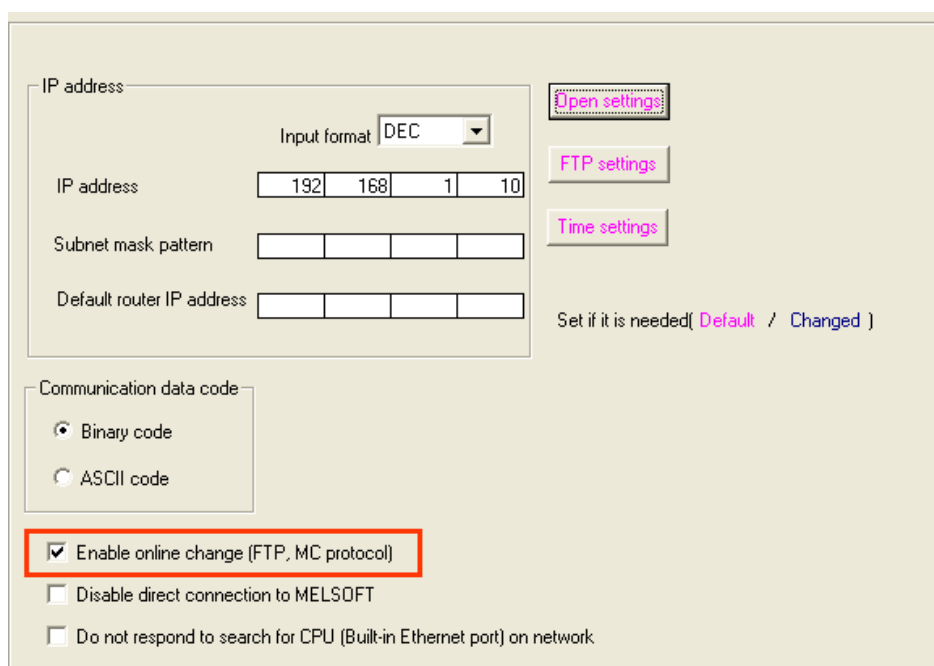
- Adjust the *Built-in Ethernet port open settings* located in PLC-Parameter.

Note!

The setting in *Host station port No.* must always be hexadecimal format, for example port no. 1025 dec => 0401 hex.

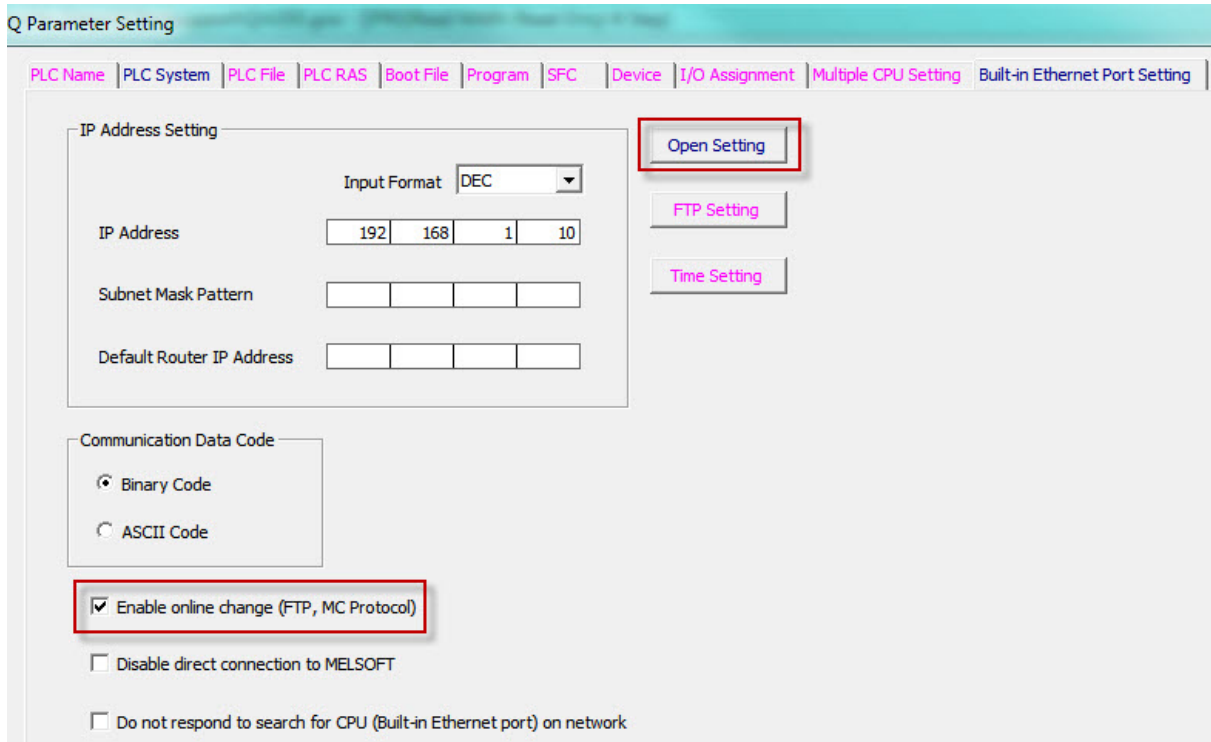


- Check *Enable online change (FTP,MC protocol)* to be able to write to the iX-terminal, otherwise it's read only:

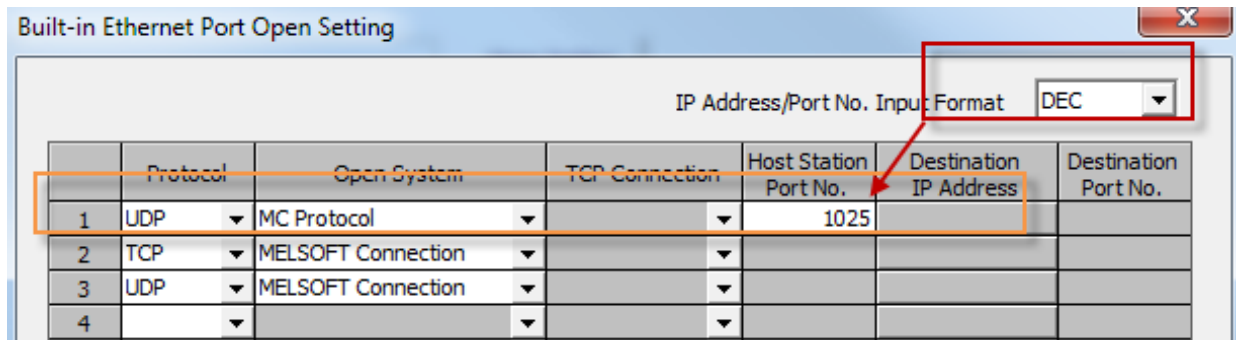


3.2 Settings in GX Works2

- Adjust the *Built-in Ethernet port open settings* located in PLC-Parameter.



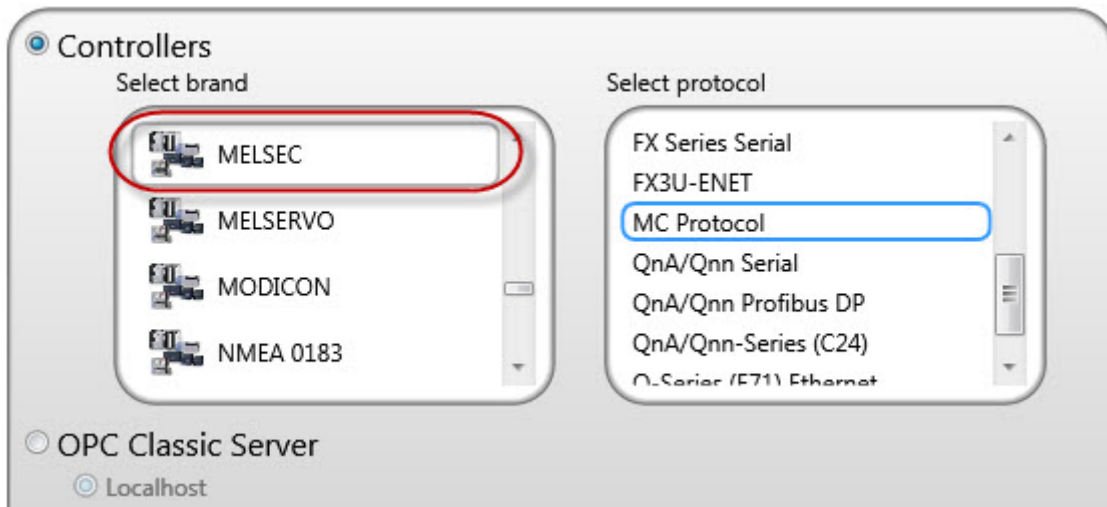
- Port no. in decimal.



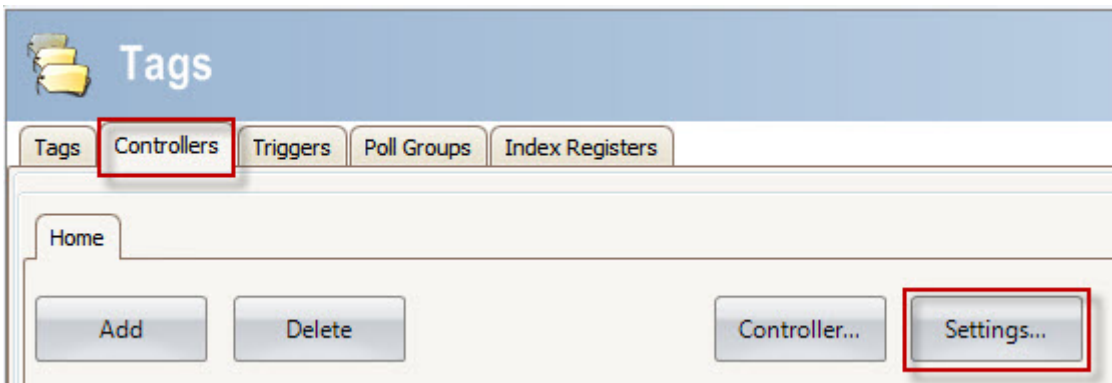
4 Set up iX Developer 2.0

When creating a new project or adding/changing controller:

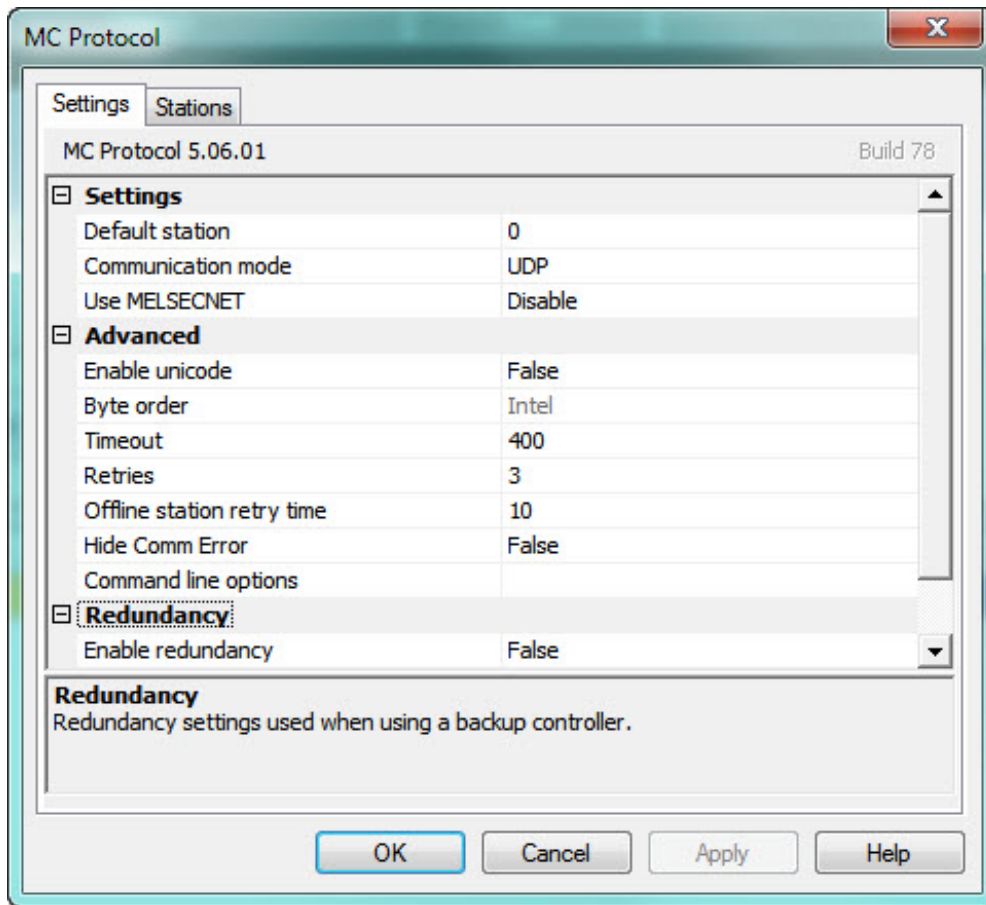
- Select MELSEC controller with MC Protocol.



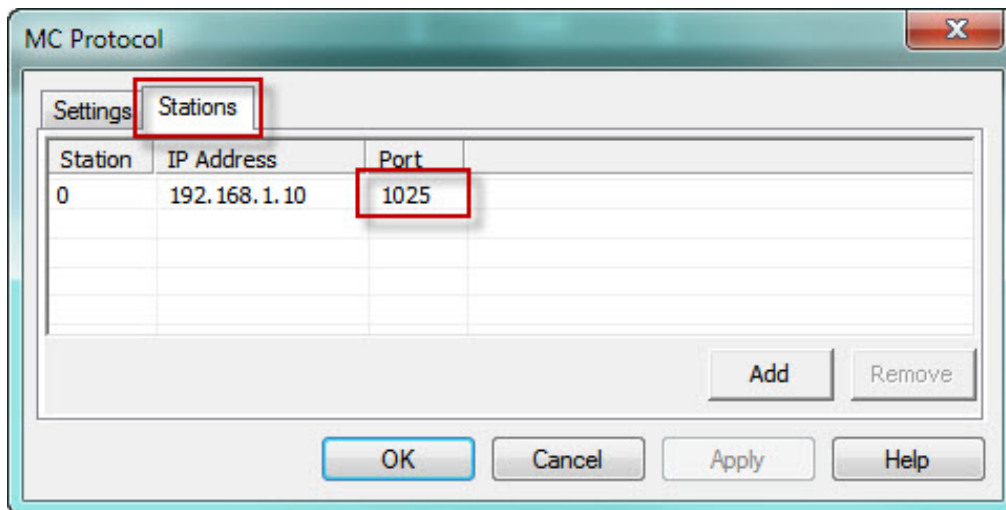
- Open settings located under Tags.



- Change settings if needed on your set up.



- Click on “Stations” to change IP and Port no. (in decimal). Click “OK”



The configuration is done!

Tip!

Help about driver, click on “Help”