



1 Function and area of use

This document explains how to download an iX Developer 2.0 project via Ethernet/USB to an iX panel. The file copying via USB to TxA and TxB panels is handled automatically at startup. For TxC, you must move the project manually. Note that the runtime database will be replaced by the database in the design project when you make a download to the panel.

Software requirements:

- iX Developer 2.0

Hardware requirements:

- iX Panel (TxA, TxB, TxC)
- Network cables
- WinCE 6.0 Compatible USB-stick (see our home page for recommendations)

2 About the Start-up document

This Start-Up document should not be considered as a complete manual. It is an aid to be able to start up a normal application quickly and easily. For further information we refer to the iX Developer reference manual and User guide.

- MAxx831x (Reference manual)
- MAxx832x (User Guide)

This document and other Start-Up documents can be downloaded from www.beijerelectronics.com.

Please use the address manuals@beijerelectronics.com for feedback on our Start-Up documents.

3 Download project via Ethernet

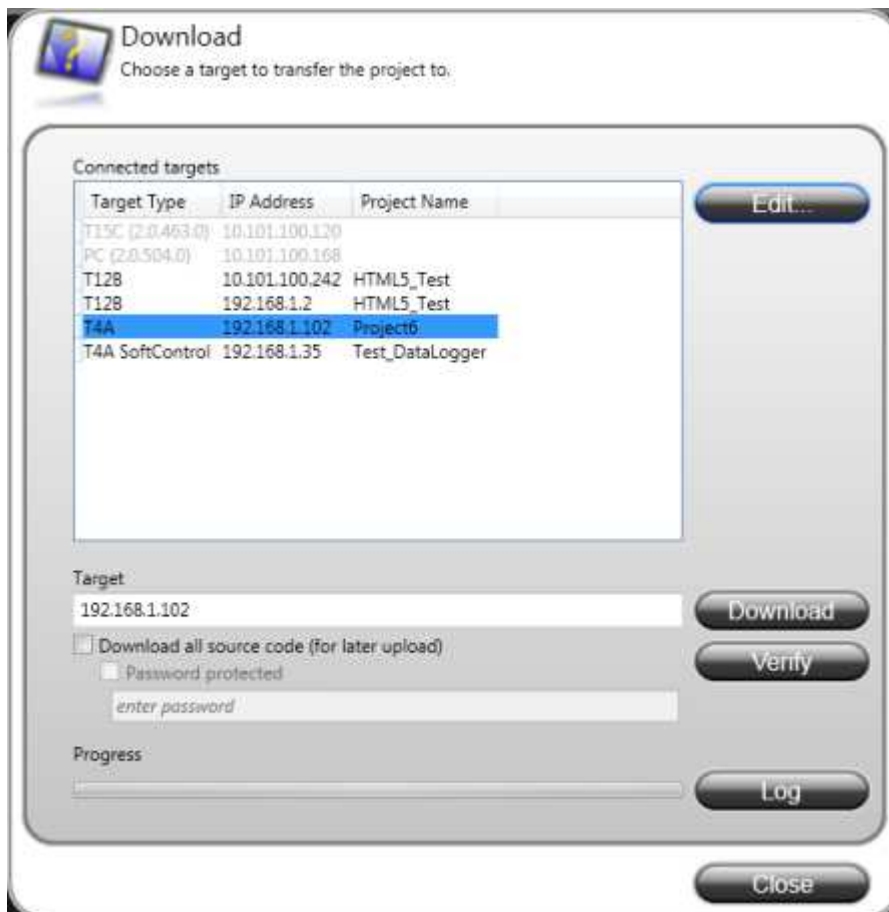
- In the project application click on *Download* under *Project* in the ribbon menu.



- iX Developer will build and validate the project before showing the transfer dialog



- When the project has been validated all accessible panels in your network show up in the dialog.



If nothing shows up, examine your firewall settings.

Edit – Change IP address remotely



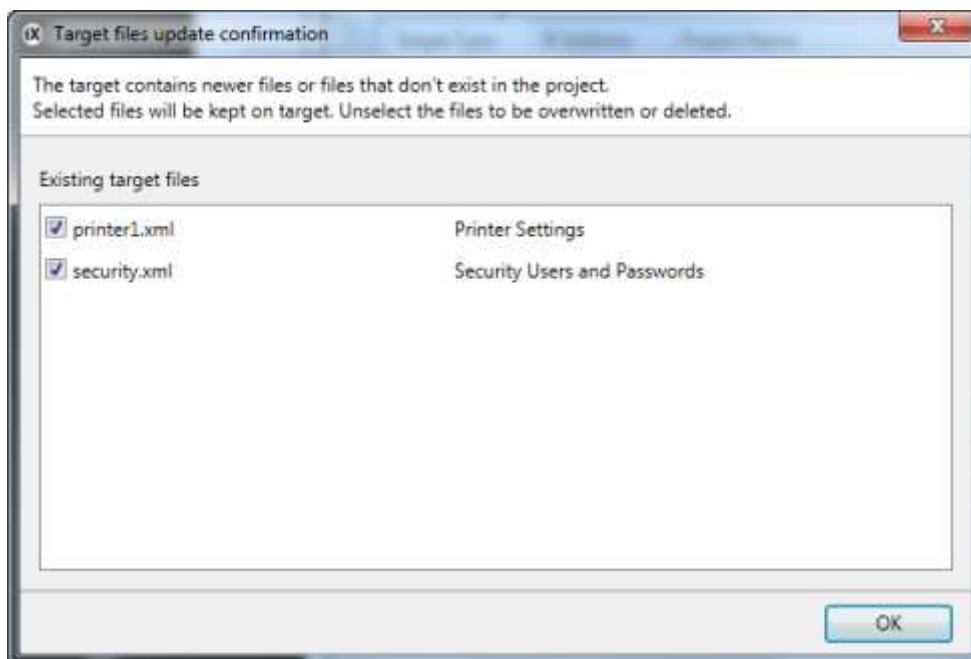
Download – Transfer project to panel

Verify – Compare design project with runtime project.

Log – View transfer log file

Option *Download all source code (for later upload)* with password protection. This option will zip the whole design project for later editing. This option is only available with ethernet transfer. This option is required to perform Verify and Uploads from panel targets.

- Choose your target and press download. If the target for the download contains newer files or files that don't exist in the project, a dialog will appear. Choose if you want to keep, overwrite or delete the files.



- You can follow the transfer progress.



4 Transfer via USB

The project can be exported to a USB stick and then transferred to the panel. In TxA and TxB, the file copying is handled automatically at startup. For TxC must user move the folder manually.

- In the project application click on *Export* under *Project* in the ribbon menu.



- Select the root path of your USB device. The exported project folder contains only **Runtime files**. You can not open this project in iX Developer.



4.1 Transfer via USB TxA, TxB

- Plug in USB memory stick to the panel. Reboot the panel. If the panel detect a valid project on the USB, an Update project message is displayed. The system will ask you if you want to make a backup of the existing (running) project before overwriting.

4.2 Transfer via USB, TxC

- Stop/Exit the running project. Make a backup of your existing project before the next step. On Windows7 the path is:

C:\Users\Public\Public Documents\Beijer Electronics AB\iX Developer Runtime\2\Project

- Delete the existing project folder. All the necessary files you need is stored in the new project folder on your USB.
- Copy the folder *Project* from USB memory stick to TxC panel.