



1 Function and area of use

This document explains how to set up and use aliases in iX Developer 2.0.

An alias should be treated as a property of a screen and can act as a stand-in for a tag. The alias can be used to reference a tag wherever that tag can be referenced directly. When used, iX Developer will act the same as if the original tag had been used. Each screen using aliases can be configured with a different instance with different tag references.

Using aliases will enable reuse of screens without having to create a new duplicated screen.

Software requirements:

- iX Developer 2.0

2 About this Start-Up document

This Start Up document should not be considered as a complete manual. It is an aid to be able to start up a normal application quickly and easily. For further information we refer to the manual for iX Developer 2.0. This document and other Start Up documents can be obtained from your closest distributor of operator terminals.

Please use the address *manual@beijer.se* for feedback on our Start Up documents.

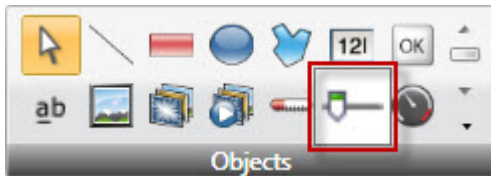
3 Set up screens and creating aliases

In this Start-Up document we will pretend that we have 3 motors which we want to set 2 parameters to, *Speed* and *Max current*. Aliases will help us to make this easy.

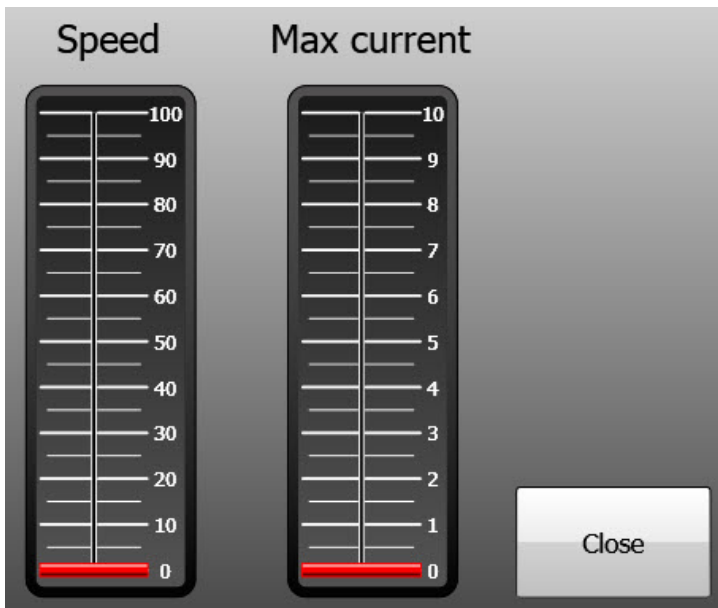
- Create 3 buttons on the startup screen and name them *Motor 1/2/3*.



- Create a new screen.
- Add 2 sliders and 1 button to the new screen.

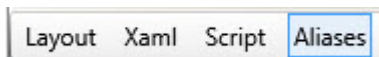


The sliders will represent the motor parameters and the button will close the screen.

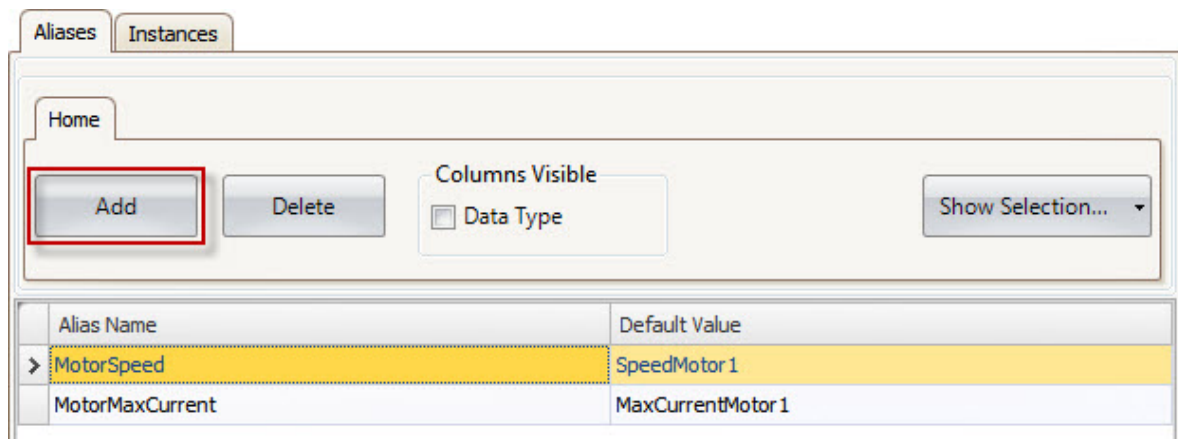


3.1 Adding aliases

- On the bottom left of the screen, on the *desktop view mode tabs*, click on *Aliases*.



- Add two aliases by clicking on *Add*. Name the 2 aliases like the parameters we want to use. These names will only be shown locally on the current screen.
- In the *Default Value* column, type in a default tag name. Click on enter and the tag will automatically be created or browse for desired tag.



Parameter	Description
Alias Name	Symbolic name. The name can be any alphanumeric string, beginning with a letter (a-z, A-Z).
Default Value	Selection of tags to create aliases of. If no tag is selected the alias will be treated as a local screen variable. The default value will be the default value for the alias in the created instances. It will also be the reference for the default instance.
Data Type	Selection of data type. This setting is enabled by first clicking the Data Type checkbox. The data type will by default reflect the data type of the selected Default Value.

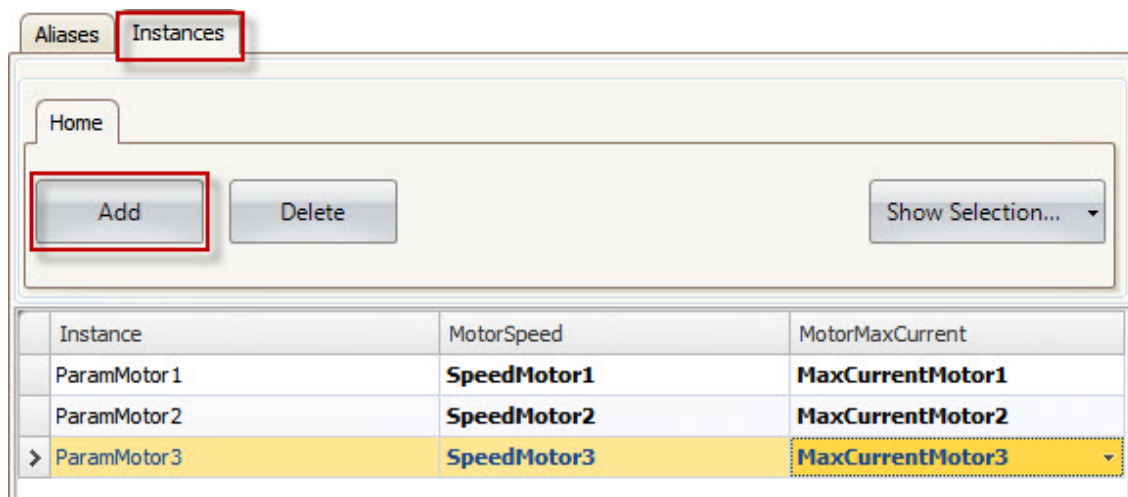
3.2 Adding instances

- Click on *Instances*.

The aliases created in the project are presented in a table on the instances tab. It is possible to change the value for the aliases in this tab, in order to override the default value configured in the aliases tab.

If a value for an alias is changed in the instances tab, the new value is displayed with bold text to indicate that it differs from the alias' default value.

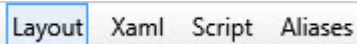
- Add 3 instances.
- Add instance names and alias values.



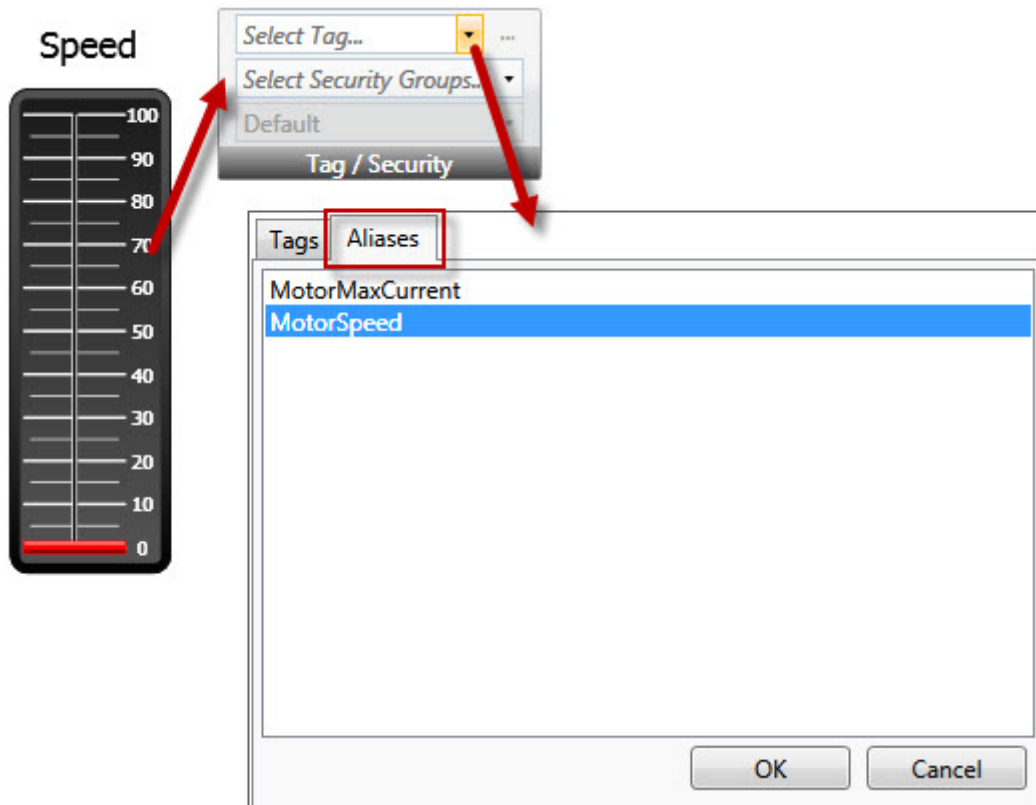
Parameter	Description
Instance	Symbolic name. The name can be any alphanumeric string, beginning with a letter (a-z, A-Z).
Aliases	The names of all aliases created in the project will be displayed in the columns headers. The values connected to the aliases will be listed in each columns.

3.3 Connecting alias to object

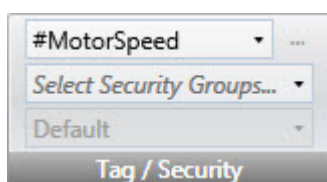
- Go back to layout view mode.



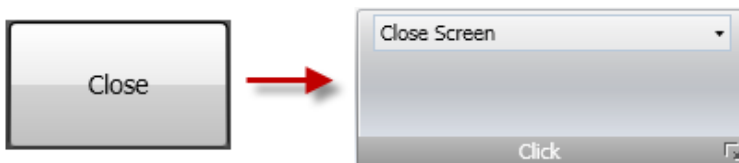
- Select the “Speed-slider” and expand the tags configuration window. Click on *Aliases* and select *MotorSpeed*.



When connected:



- Do the same thing with “Max current-slider”.
- Set the *Close-button* action to close the screen.

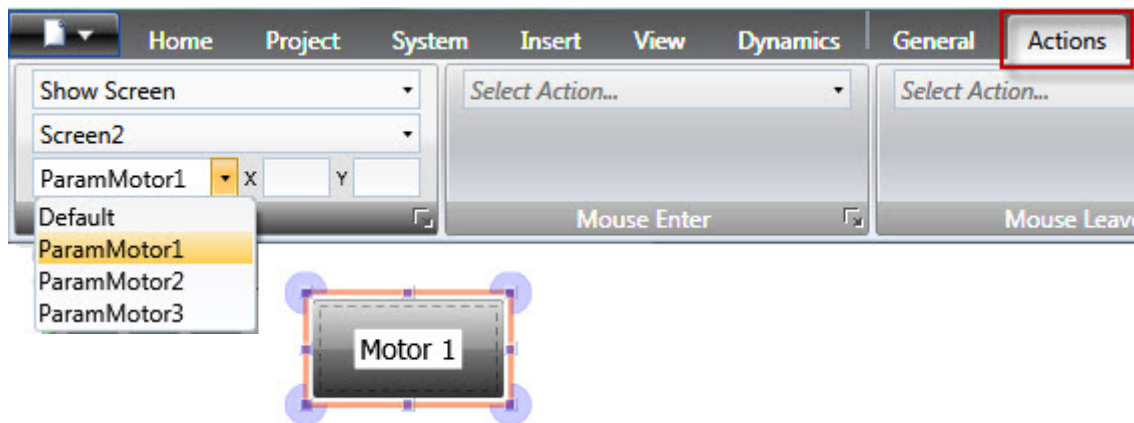


3.4 Show screen action with instances

The *Show Screen* action can be used to display a specific screen. For screens that have aliases, it is also possible to select which instance of the screen to use, and thereby also which set of tags to assign to the screen's aliases.

- Back on the startup screen. Select button "Motor 1" and click on *Actions*. Select *Show Screen* and choose *Screen2* (with aliases). Now we can select which instance we want to use. In this case *ParamMotor1*.

The *Default* option is a virtual instance configured with the alias' default values.



- Do the same thing with motor 2 and 3.
- Run the program and test the function.

The configuration is done!

4 Limitations

Alias do not support array tags.

Alias can not be used in connection with expressions.

Alias can not be used with the TrendViewer object.

There is no scripting support for *ValueChange*-event on an alias.